



Current Transformer

Model 7SHT-0.333 / 7SFT-0.333

CERTIFICATIONS:



E228202



223647



APPLICATION:

With ammeters, wattmeters and cross current compensation.

FREQUENCY:

50-400 Hz.

INSULATION LEVEL:

600 Volts. 10 kV BIL. full wave

WINDOW DIAMETER:

2.50"

APPROXIMATE WEIGHT:

1.5 lbs.

CONNECTIONS:

- Flexible leads are UL 1015 105 C, CSA approved #16 AWG, 24" long
- Non-standard length to be specified
- Terminals are brass studs No. 8-32 UNC with one flat washer, lockwasher, and regular nut
- Mounting kit 59-0219

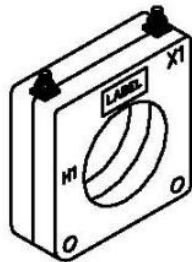


Model	7SHT	7SFT
Window Size	2.50	2.50
Width	4.56	4.56
Height	4.85	4.85
Depth	1.10	1.08

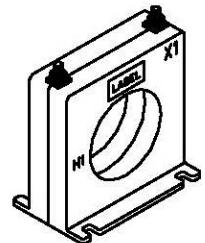
7**

Window Diameter 2.50"
Approximate weight: 1.5 lbs.

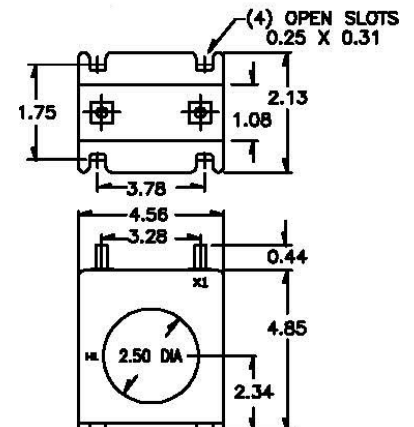
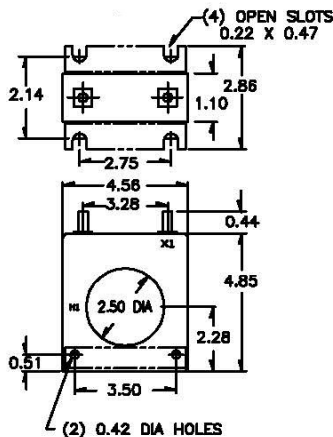
CATALOG NUMBER	CURRENT VOLTAGE RATIO
7**-201-0.333	200:0.333
7**-251-0.333	250:0.333
7**-301-0.333	300:0.333
7**-401-0.333	400:0.333
7**-501-0.333	500:0.333
7**-601-0.333	600:0.333
7**-751-0.333	750:0.333
7**-801-0.333	800:0.333
7**-102-0.333	1000:0.333
7**-122-0.333	1200:0.333
7**-152-0.333	1500:0.333
7**-162-0.333	1600:0.333



7SHT



7SFT



Products are manufactured in a plant whose quality management system has been certified to be in compliance with ISO 9001:2015 by NQA