



## Current Transformer

**Model 5SHT-0.333 / 5SFT-0.333** rev 031821

**APPLICATION:**

With ammeters, wattmeters and cross current compensation

**FREQUENCY:**

50-400 Hz.

**INSULATION LEVEL:**

600 Volts. 10 kV BIL. full wave

**WINDOW DIAMETER:**

1.56"

**APPROXIMATE WEIGHT:**

1.0 lbs.

**CONNECTIONS:**

- Flexible Leads are UL 1015 105°C, CSA approved #16AWG, 24" long
- Non-standard length to be specified
- Terminals are brass studs No. 8-32 UNC with one flat washer, lock washer, and regular nut
- Mounting bracket Part #59-0218

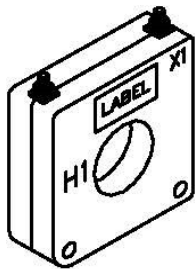


**CERTIFICATIONS:**



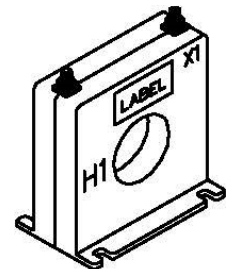
Model	5SHT	5SFT
Window Size	1.56	1.56
Width	3.53	3.53
Height	3.65	3.78
Depth	1.09	2.15

**MODEL 5\*\***  
**Window Diameter 1.56"**  
**Approximate weight: 1.0 lbs.**

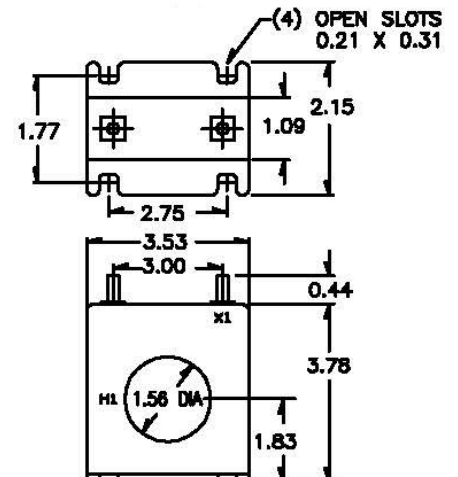
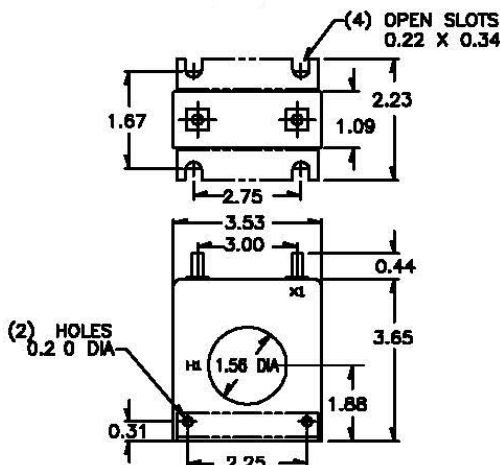


5SHT

CATALOG NUMBER	CURRENT VOLTAGE RATIO
5**201-0.333	200:0.333
5**251-0.333	250:0.333
5**301-0.333	300:0.333
5**401-0.333	400:0.333
5**501-0.333	500:0.333
5**601-0.333	600:0.333
5**751-0.333	750:0.333
5**801-0.333	800:0.333
5**102-0.333	1000:0.333
5**122-0.333	1200:0.333



5SFT



Products are manufactured in a plant whose quality management system has been certified to be in compliance with ISO 9001:2015 by NQA