

Control Power Transformer

**Model 3CPT3-60-30,
3CPT5-95-30, 3CPT3-60-45,
3CPT5-95-45 rev 050919**

FREQUENCY:

60 Hz.

THERMAL RATING:

30 kVA at 30°C. ambient
25.7 kVA at 55°C. ambient
80°C rise.
45 kVA at 30°C ambient
38.6 kVA at 55° ambient.
80°C rise.

STANDARD SECONDARY VOLTAGE:

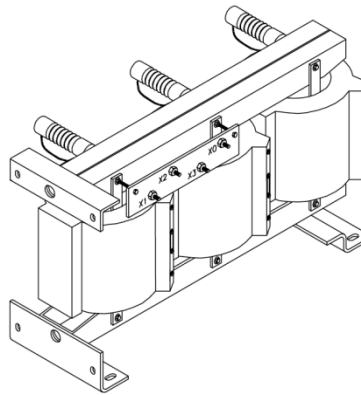
120 volts

INSULATION LEVEL:

3CPT3: 5kV
60 kV, 60 kV BIL full wave. 130°C
3CPT5: 15kV,
95 kV, 95 kV BIL full wave. 130°C

APPROXIMATE WEIGHT:

730 lbs.



CERTIFICATIONS:



- Primary terminals are copper compression type lugs.
- Secondary terminals are brass studs 1/2-13 with one flat washer, star washer and two regular nuts.
- The high voltage coils are vacuum encapsulated in epoxy resin. Complete unit is varnish dipped.
- Supplied with taps on the primary side:
Cat. Suffix A -(1) ± 7-1/2% taps or
Cat. Suffix B -(2) ± 2-1/2% taps.
- Secondary typically 120/240 V operation.
- Available as unfused only.
- Vertical or horizontal mounting.
- Mounting base and frame is 7 ga. (0.188" thk) steel, with (8) 0.56 x 0.875 slots.
- For indoor use.

***CATALOG NO.	PRIMARY VOLTAGE	SECONDARY VOLTAGE	**FUSE RATING	***CATALOG NO.	PRIMARY VOLTAGE	SECONDARY VOLTAGE	**FUSE RATING
3CPT3-60-15-242	2400	208Y/120	10E	3CPT3-60-45-242	2400	208Y/120	25E
3CPT3-60-15-4161	4160	208Y/120	7E	3CPT3-60-45-4161	4160	208Y/120	15E
3CPT3-60-15-482	4800	208Y/120	5E	3CPT3-60-45-482	4800	208Y/120	15E
3CPT5-95-15-722	7200	208Y/120	5E	3CPT5-95-45-722	7200	208Y/120	15E
3CPT5-95-15-842	8400	208Y/120	5E	3CPT5-95-45-842	8400	208Y/120	15E
3CPT5-95-15-123	12000	208Y/120	3E	3CPT5-95-45-123	12000	208Y/120	7E
3CPT5-95-15-1242	12470	208Y/120	3E	3CPT5-95-45-1242	12470	208Y/120	7E
3CPT5-95-15-1322	13200	208Y/120	3E	3CPT5-95-45-1322	13200	208Y/120	7E
3CPT5-95-15-1382	13800	208Y/120	3E	3CPT5-95-45-1382	13800	208Y/120	7E

*Note all fuse ratings are based upon NEC transformer overcurrent protection recommendations. Specific applications may require other ratings.

PRIMARY VOLTS	CONNECT
107.5%	1 – 2
100%	2 – 3
92.5%	3 – 4

1 ± 7-1/2% PRIMARY TAPS – SUFFIX "A"

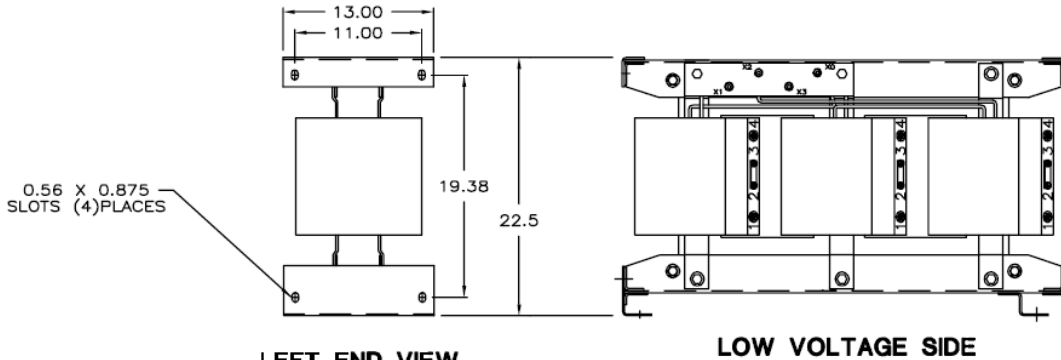
PRIMARY VOLTS	CONNECT
105%	1 – 2
102.5%	2 – 3
100%	3 – 4
97.5%	4 – 5
92.5%	5 – 6

2 ± 2-1/2% PRIMARY TAPS – SUFFIX "B"

Products are manufactured in a plant whose quality management system has been certified to be in compliance with ISO 9001:2015 by NQA

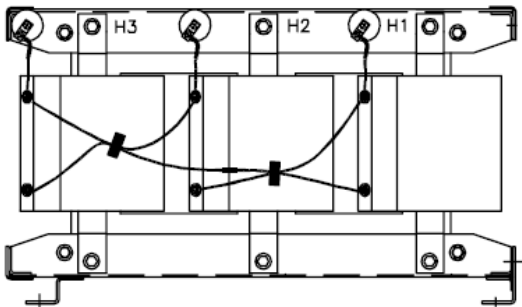
Control Power Transformer

Model 3CPT3-60-30,
3CPT5-95-30, 3CPT3-60-45,
3CPT5-95-45 rev 050919

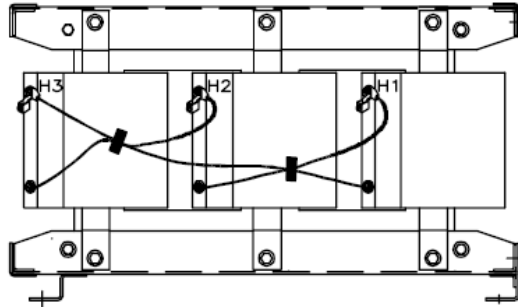


LEFT END VIEW,
(BOTTOM IN
VERTICAL MODE)

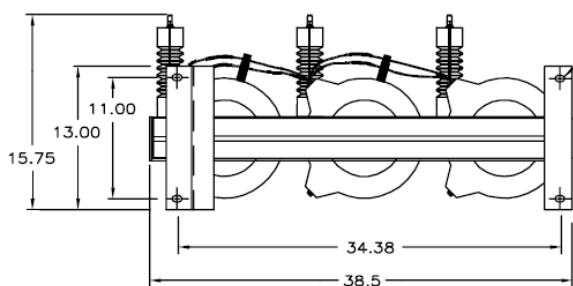
LOW VOLTAGE SIDE



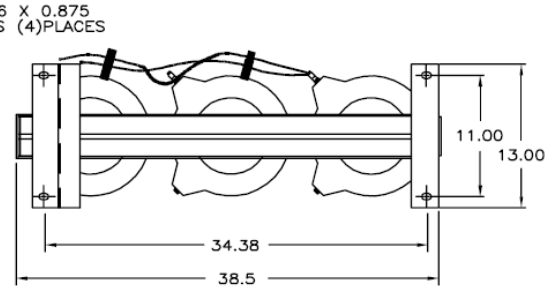
HIGH VOLTAGE SIDE



HIGH VOLTAGE SIDE

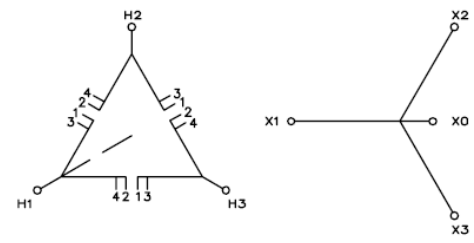
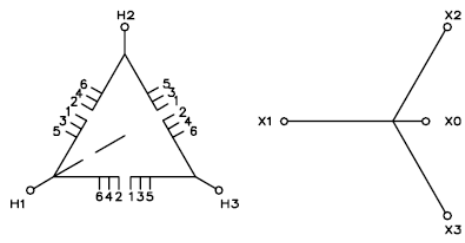


BOTTOM VIEW
(95kV BIL)



BOTTOM VIEW
(60kV BIL)

FOR HORIZONTAL OR VERTICAL MOUNTING



Products are manufactured in a plant whose quality management system has been certified to be in compliance with ISO 9001:2015 by NQA